



YOMN OSMAN

INTERIOR DESIGN

ARCHITECTURE

PORTFOLIO



TABLE OF CONTENTS:

US PROJECTS:

**EDUCATIONAL...
RESIDENTIAL...**

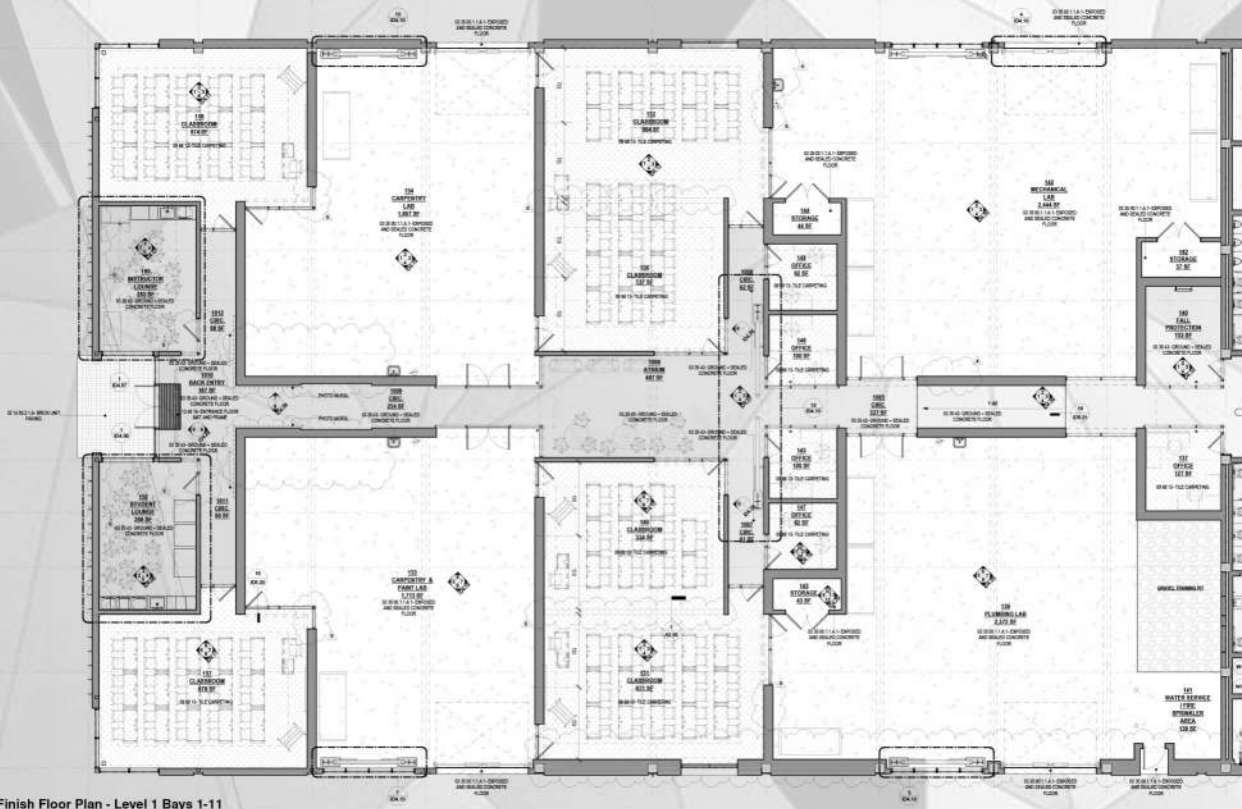
EGYPT PROJECTS:

**RETAIL...
HOSPITALITY...
CORPORATE...
RESIDENTIAL...**

EDUCATIONAL TI - RENTON WA

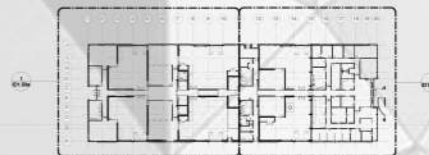
WORKING ON A 31,194 SQ.FT. PROJECT WAS AMAZING. NOT ONLY ONCE BUT TWICE AS WE HAD TO REDESIGN THE WHOLE PROJECT BECAUSE OF BUDGETS PROBLEMS. I GOT TO EXPERIENCE A LOT OF COORDINATION WITH STRUCTURAL, MEP & LIGHTING. BEING ABLE TO LINK REVIT MODEL AND REVIEW CONFLICTS WAS HELPFUL. I WORKED ON THE INTERIORS , CABINETRY DESIGN, CABINETRY DETAILS AND PERMIT FORMS





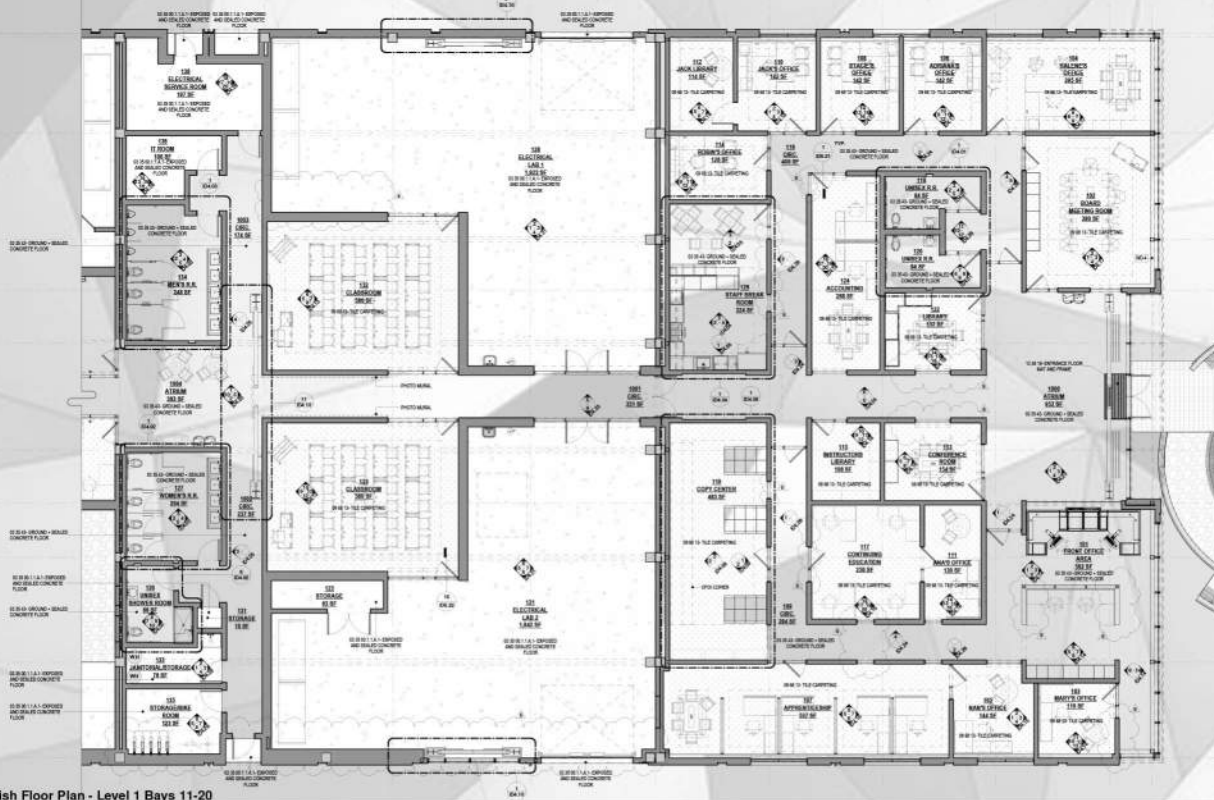
1 Finish Floor Plan - Level 1 Bays 1-11

3/16" = 1'-0"



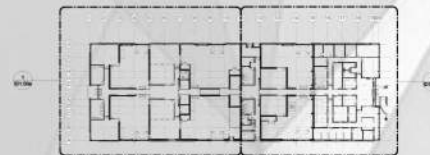
2 Floor Plan Sheet Legend

1" = 40'-0"



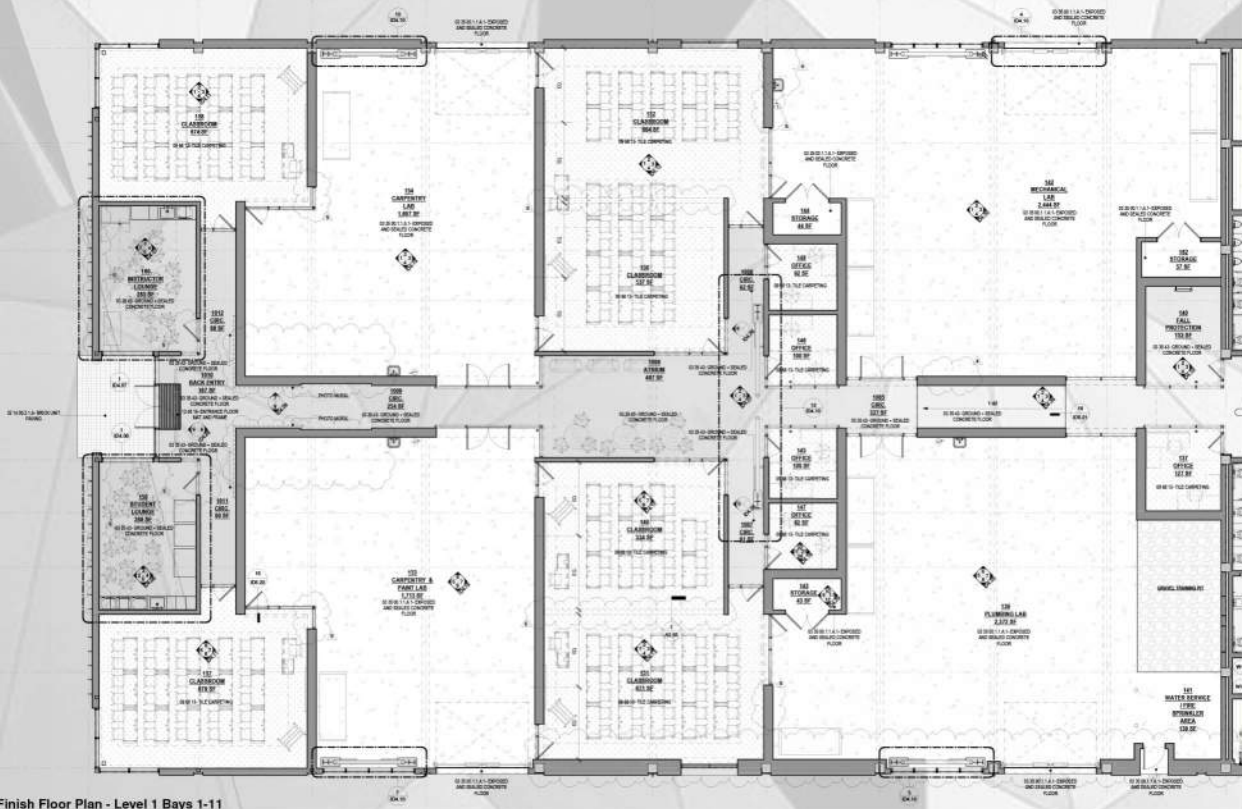
1 Finish Floor Plan - Level 1 Bays 11-20

3/16" = 1'-0"



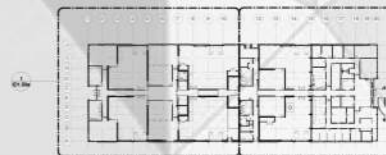
2 Floor Plan Sheet Legend

1" = 40'-0"



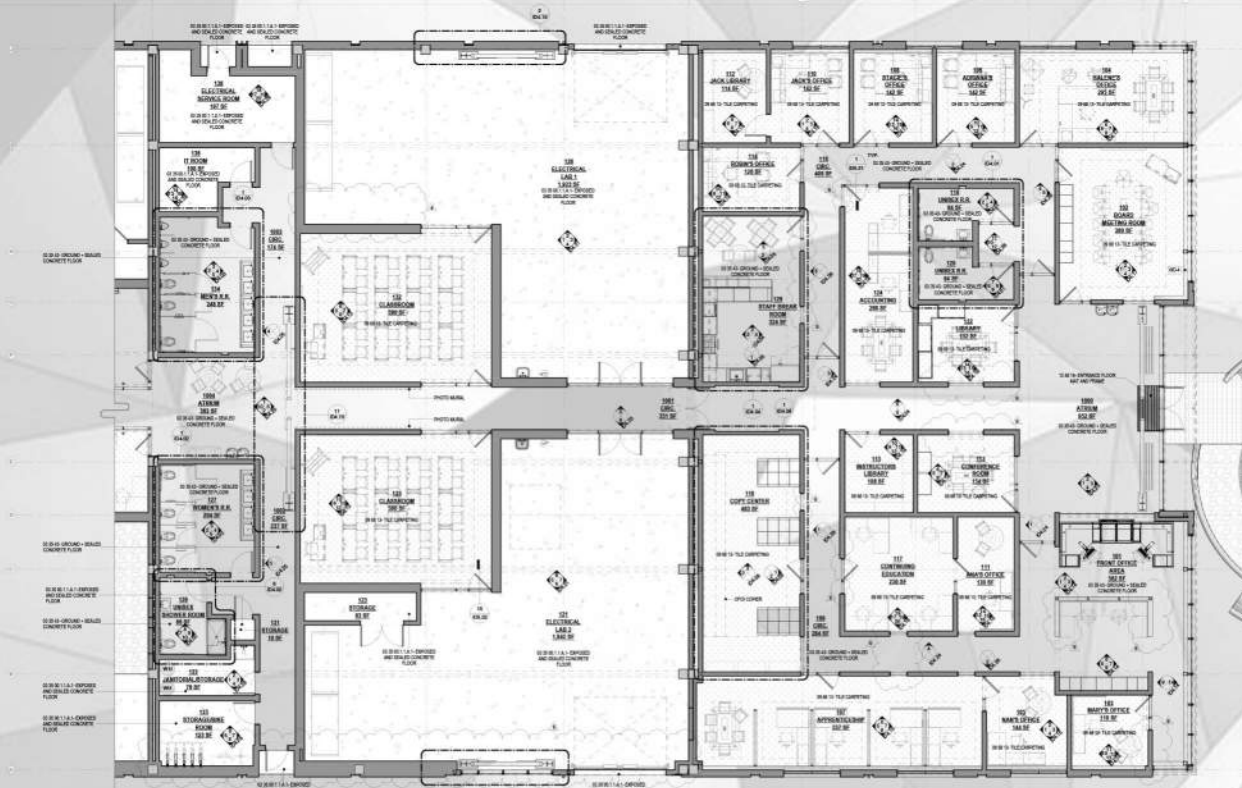
1 Finish Floor Plan - Level 1 Bays 1-11

3/16" = 1'-0"



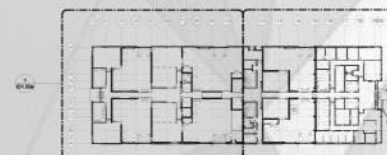
2 Floor Plan Sheet Legend

1" = 40'-0"



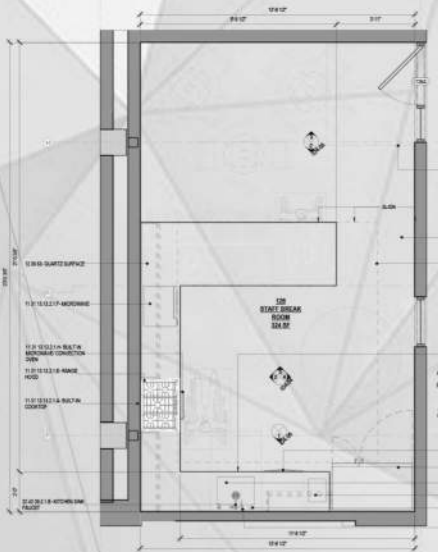
1 Finish Floor Plan - Level 1 Bays 11-20

3/16" = 1'-0"

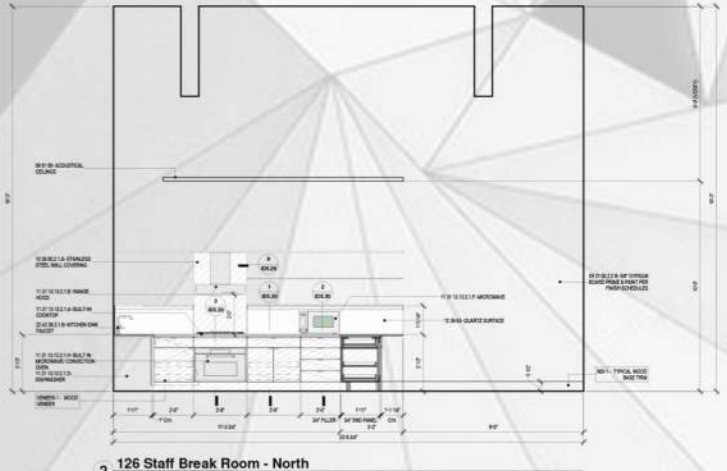


2 Floor Plan Sheet Legend

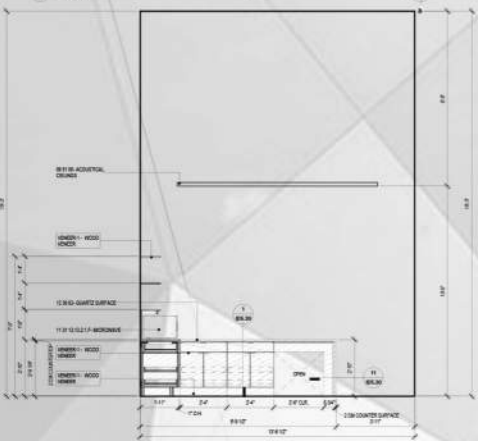
1" = 40'-0"



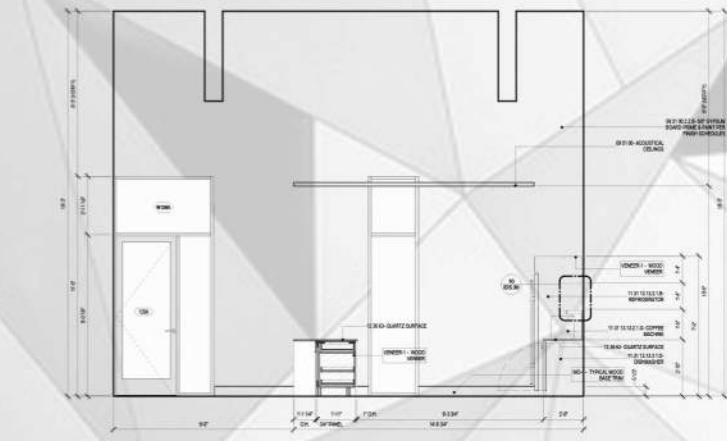
1 126 Staff Break Room - Enlarged Plan
1/2" = 1'-0"



2 126 Staff Break Room - North
1/2" = 1'-0"



3 126 Staff Break Room - East
1/2" = 1'-0"



4 126 Staff Break Room - South
1/2" = 1'-0"





RESIDENCE RENNOVATION - BREMERTON WA

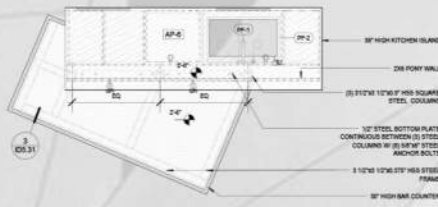
I WORKED ON THIS WATERFRONT RENNOVATION STARTING THE DD PHASE THROUGH OUT THE CD WITH A FULL INTERIOR PACAKAGE AND NOW DOING CONSTRUCTION ADMINISTRATION & SITE VISITS. THIS WAS A VERY COOL PROJECT TO WORK ON WITH LOTS OF CHALLNGING EXISTING CONDITIONS. I ALSO WORKED ON CABINET DESIGN, CABINETRY DETAILS & LIGHTING DESIGN



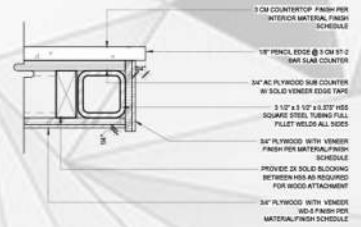


1 Level 1 - Finish Floor Plan
1/4" = 1'-0"





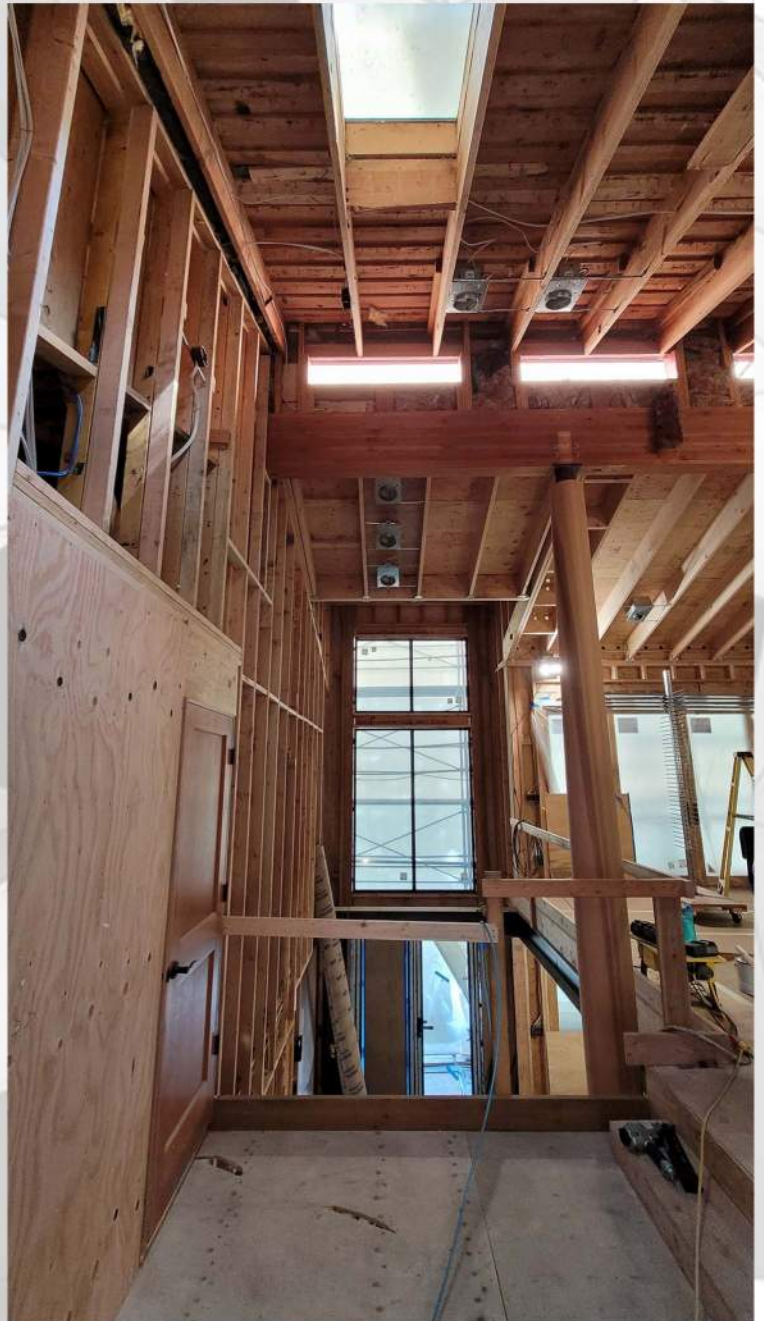
2 Enlarged Kitchen Island Plan
1/2" = 1'-0"



3 Kitchen Bar Edge Detail
3" = 1'-0"



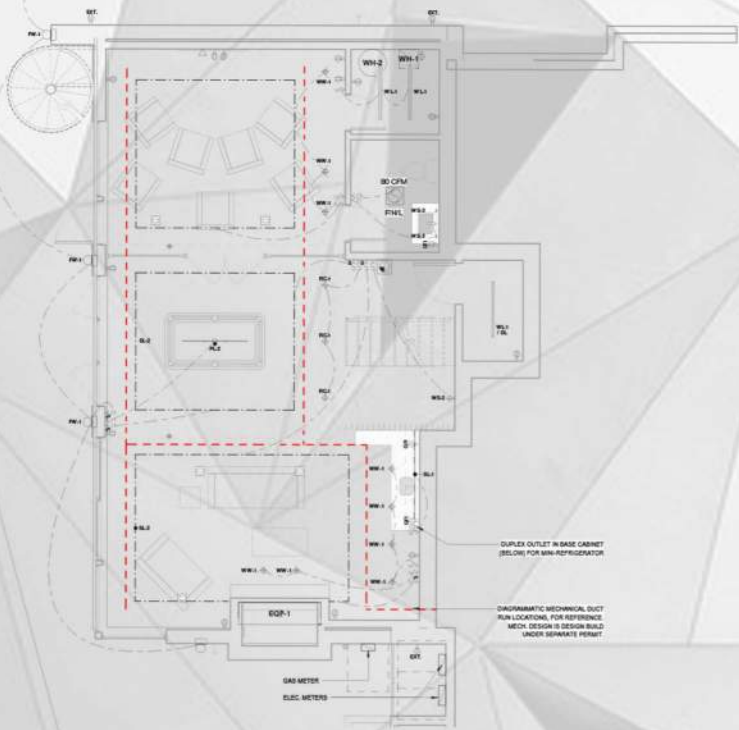
5 Kitchen Island 3D View



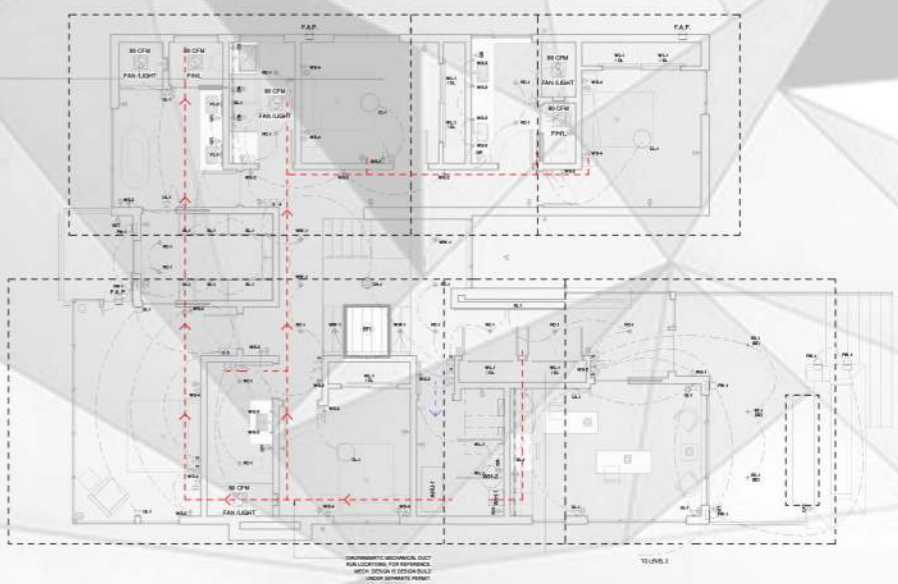
NEW CONSTRUCTION RESIDENCE - KIRKLAND WA

I STARTED WORKING ON THIS PROJECT ON THE START OF INTERIOR DESIGN PHASE. I GOT THE CHANCE TO USE ENSCAPE TO CREATE INTERIOR VIEWS THAT WE USED IN POWER POINT PRESENTATIONS SHOWING THE EXACT MATERIAL THE OWNERS CHOSE WHICH HELPED THEM VISUALIZE THEIR CHOICES. CABINETRY DESIGN AND DETAILS CONSTRUCTION OBSERVATION. LIGHTING DESIGN AND LAYOUT

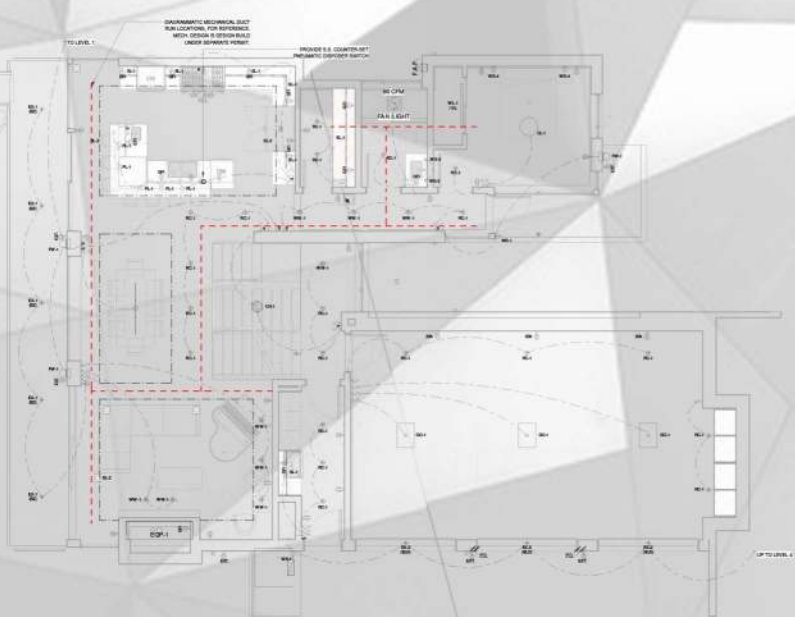
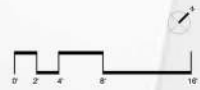




1 Level 1 Lighting Plan
1/4" = 1'-0"



1 Level 4 - 5 Lighting Plan
1/4" = 1'-0"



1 Level 2 - 3 Lighting Plan
1/4" = 1'-0"

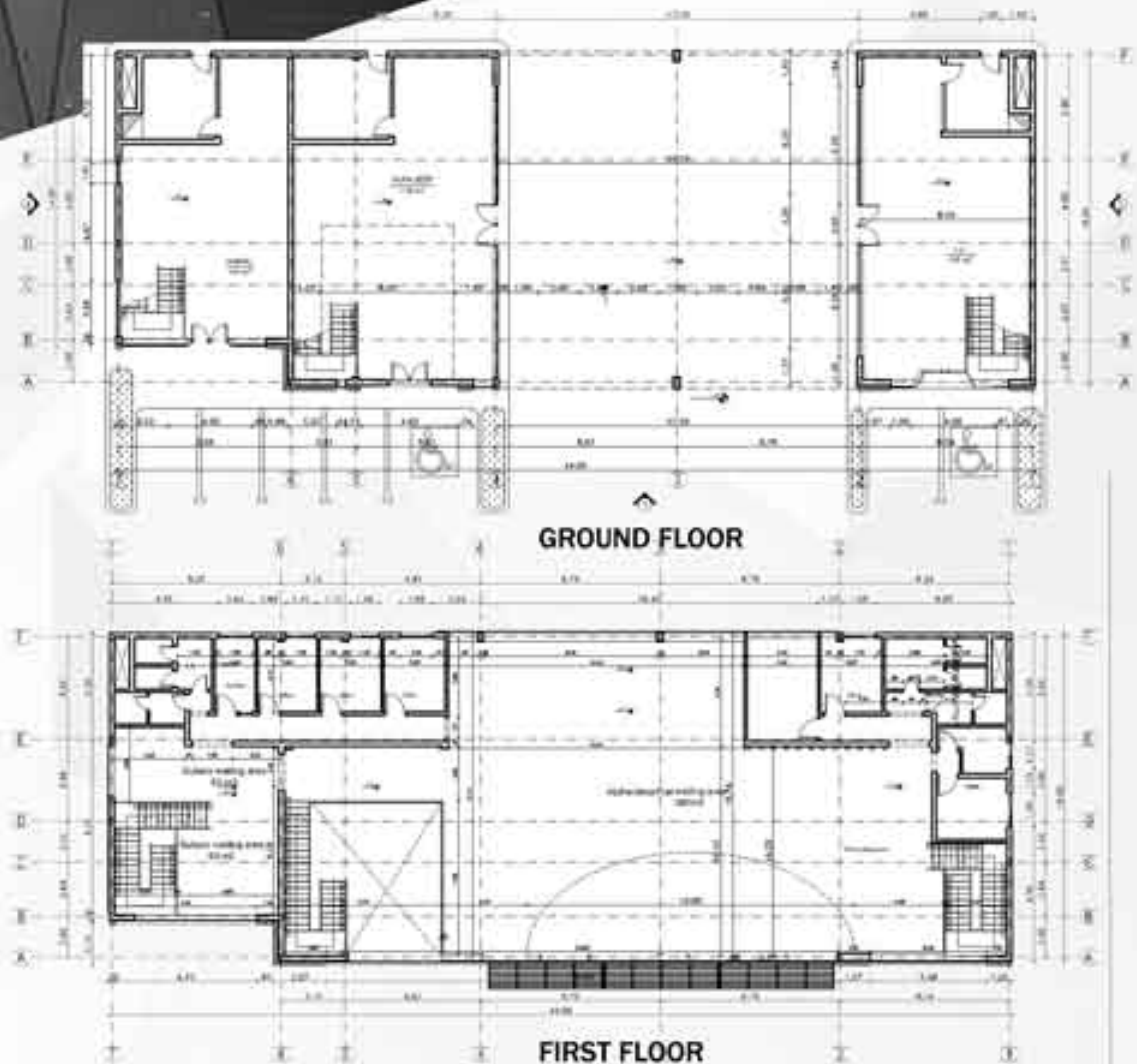






RETAIL
ABU GHALI AUTOMOTIVE DEALERSHIP
CAIRO, EGYPT
2016

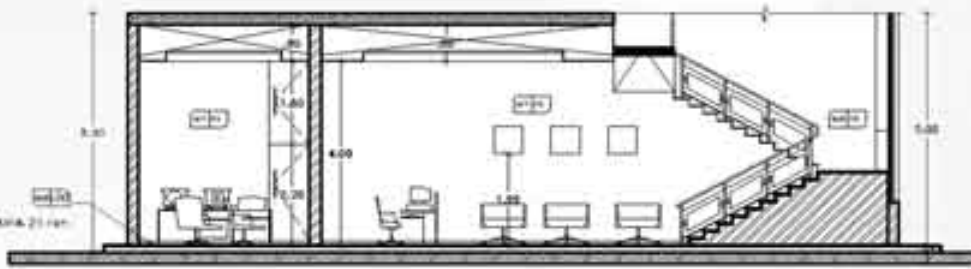
THIS PROJECT WAS A THREE PHASES PROJECT, ONE REDESIGNING "THE EXISTING WORKSHOP", NEW DESIGN FOR THE 3 DEALERSHIPS GALLERIES "FIAT ALFA-JEEP AND SUBARU" ACCORDING TO THE NEW CI AND FINALLY THE INTERIOR FOR THE THREE DEALERSHIPS TOO. ONE OF THE BIGGEST PROJECTS WE HAD IN OUR FIRM BECAUSE IF WE SUCCEEDED IN THIS ONE WILL BE RESPONSIBLE FOR REDESIGNING ALL ABU GHALI 37 DEALERSHIP ACROSS OF EGYPT AND I HAD THE PRIVILEGE OF BEING THE TEAM LEADER AND LEAD DESIGNER IN THIS PROJECT.



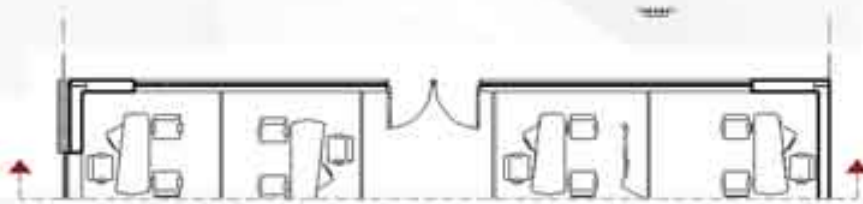
3D TO PRESENT THE DESIGNED EXTERIOR
*A PRESENTATION ARCHITECT DID THIS 3D I ONLY DESIGNED IT



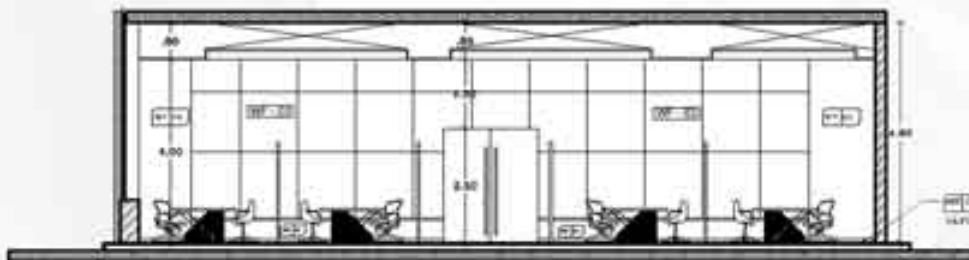
**GROUND FLOOR ALFA DEALERSHIP
SECTION C-C**



C-C



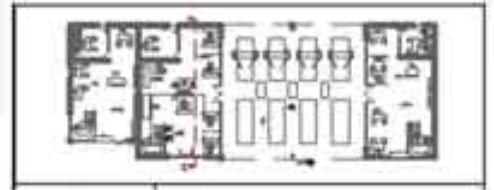
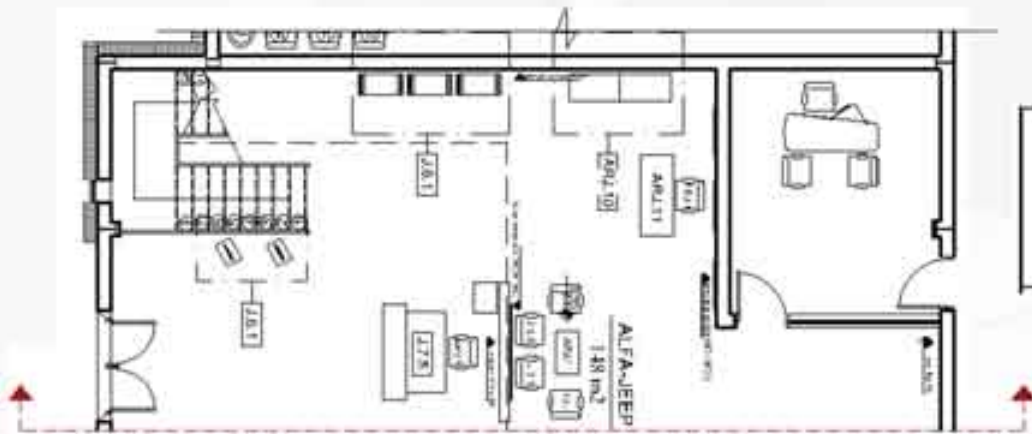
**GROUND FLOOR ALFA DEALERSHIP
SECTION D-D**



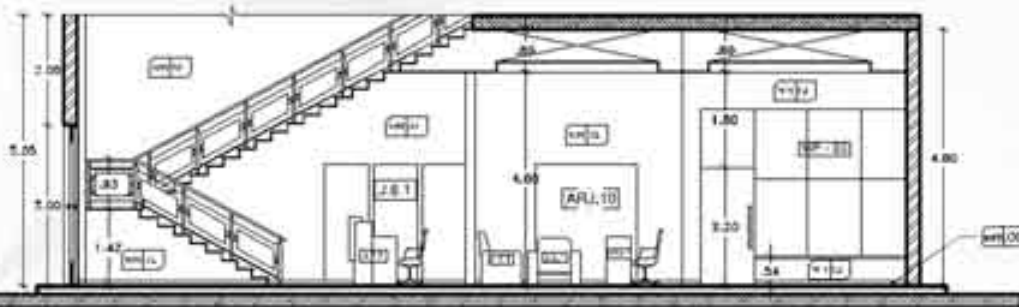
D-D



3D TO PRESENT FIAT GROUND FLOOR INTERIOR
*A PRESENTATION ARCHITECT DID THIS 3D I ONLY DESIGNED IT



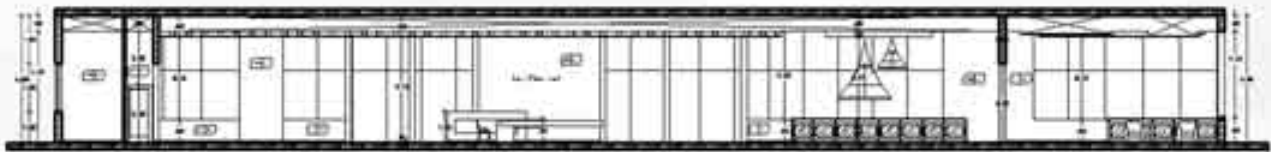
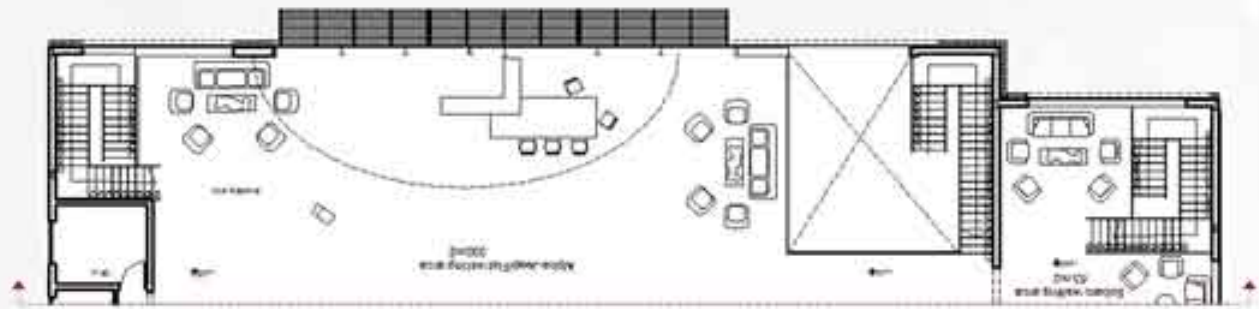
**GROUND FLOOR JEEP DEALERSHIP
SECTION D-D**



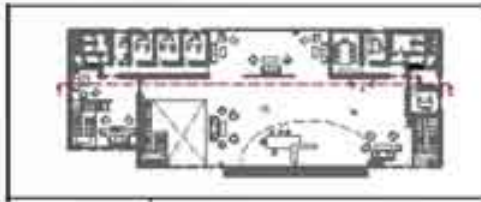
E-E



3D TO PRESENT JEEP GROUND FLOOR INTERIOR
*A PRESENTATION ARCHITECT DID THIS 3D I ONLY DESIGNED IT



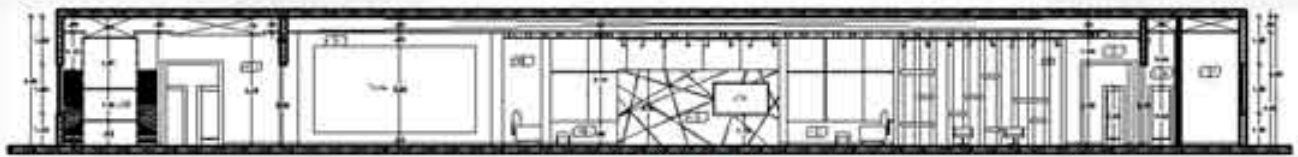
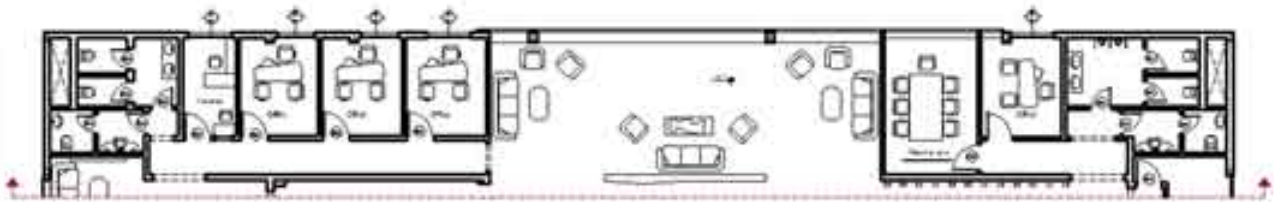
B-B



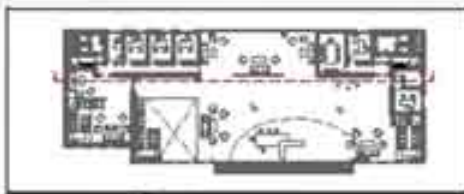
**FIRST FLOOR FIAT- JEEP DEALERSHIP WAITING AREA
SECTION B-B**



3D TO PRESENT THE DESIGNED INTERIOR
*A PRESENTATION ARCHITECT DID THIS 3D I ONLY DESIGNED IT



A-A



FIRST FLOOR FIAT- JEEP DEALERSHIP WAITING AREA
SECTION A-A



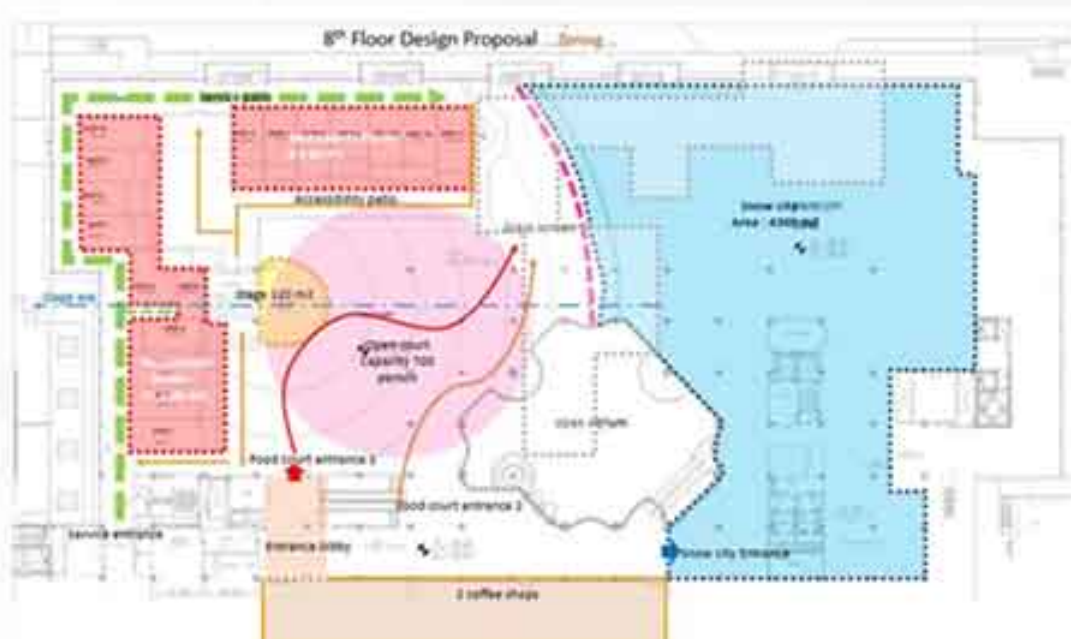
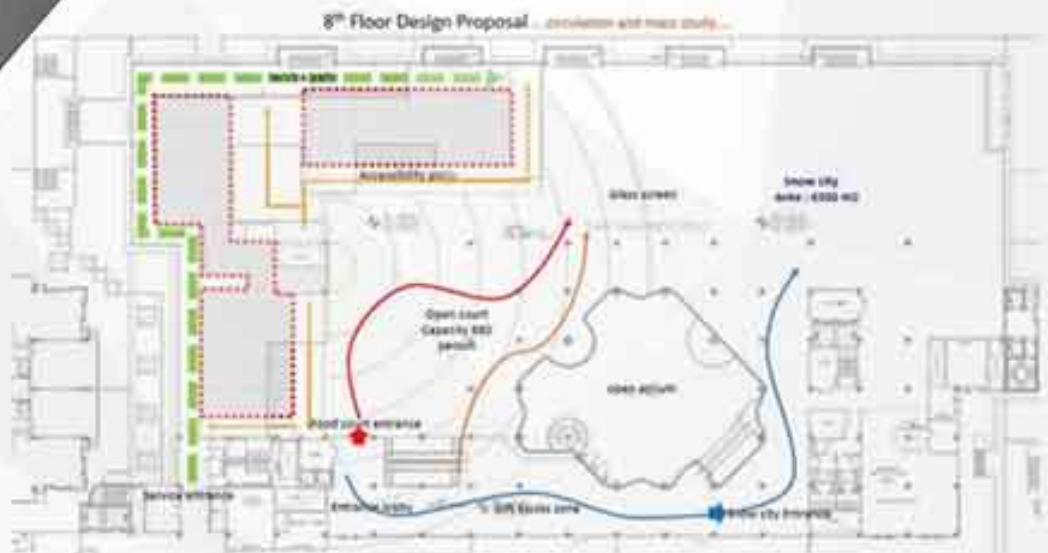
3D TO PRESENT THE DESIGNED INTERIOR
*A PRESENTATION ARCHITECT DID THIS 3D I ONLY DESIGNED IT

**HOSPITALITY
CITY STARS FOOD COURT
CAIRO, EGYPT
2016**

THE PROPOSED DESIGN IS BASED UPON CREATING THE SPIRIT OF OUTDOOR RECREATION AVENUE THROUGH TWO FLOORS BUILDINGS WITH RECREATIONAL TERRACES, PALMTREES, OUTDOOR BENCHES, FLOORING MATERIAL AND STREET LIGHTINGS FIXTURES TRYING TO GIVE THE SPIRIT OF CLASSIC OLD STREET ARCHITECTURE ELEMENTS IN FRANCE WITH A MODERN LUXURIOUS ONE.



LAYOUT PROPOSAL



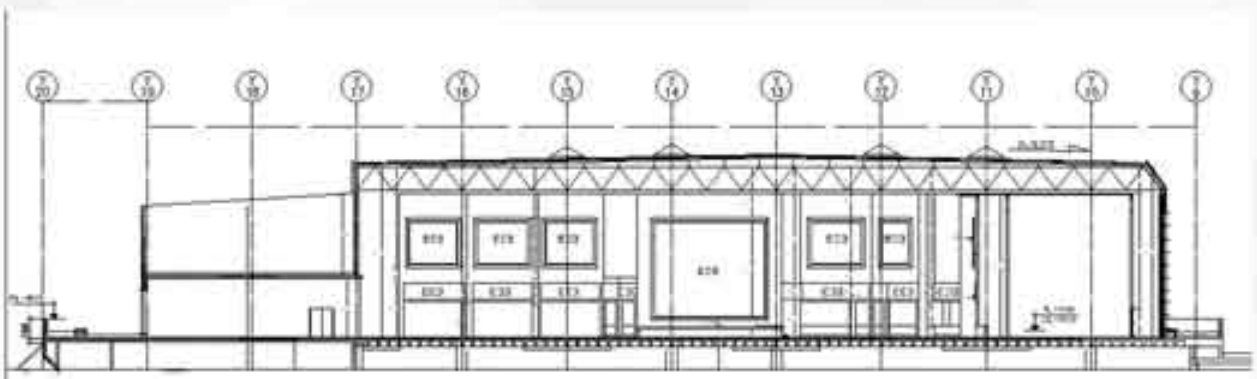


LAYOUT



3D TO PRESENT THE IDEA

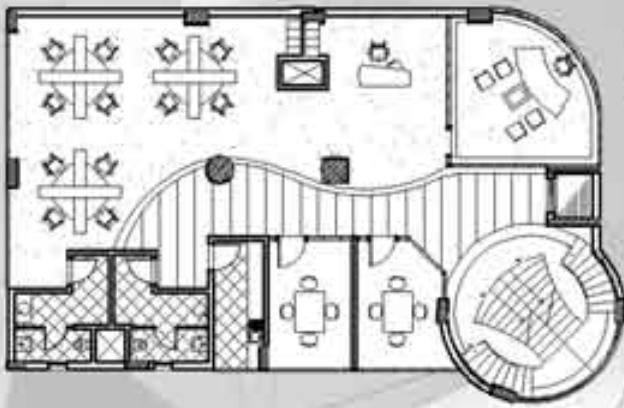
***A PRESENTATION ARCHITECT DID THIS 3D | ONLY DESIGNED IT**



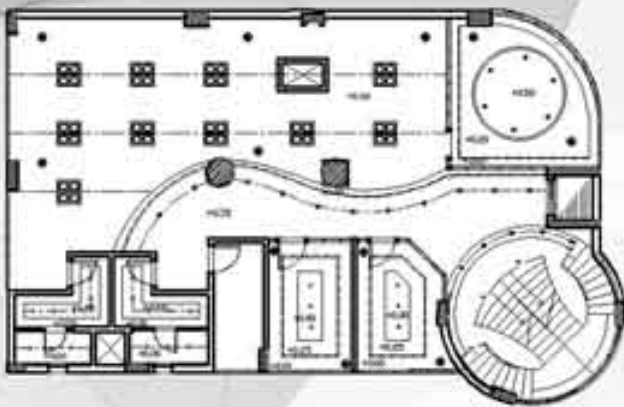
SECTION TO SHOW THE RELATION BETWEEN THE BUILDING AND THE TRUSS CEILING



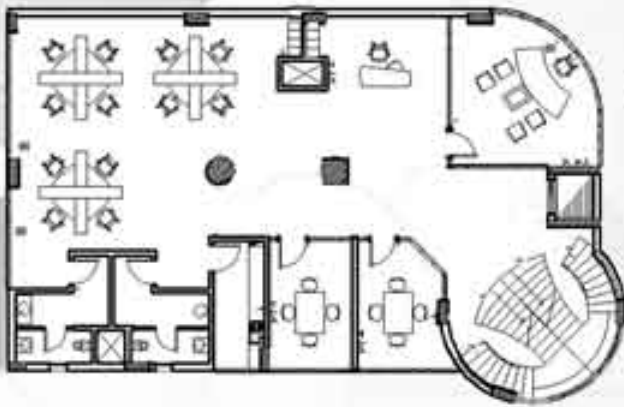
3D TO PRESENT THE IDEA
*A PRESENTATION ARCHITECT DID THIS 3D I ONLY DESIGNED IT



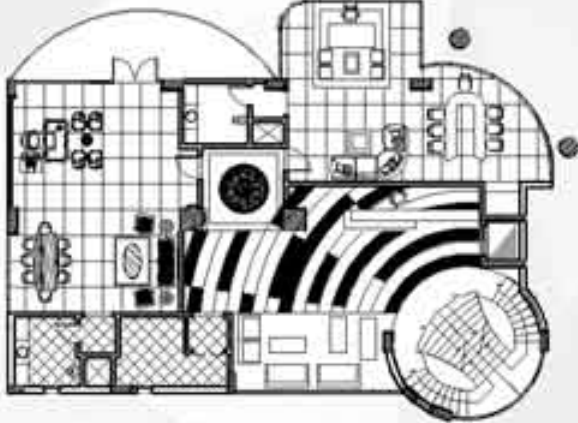
SECOND & THIRD FLOOR FLOORING



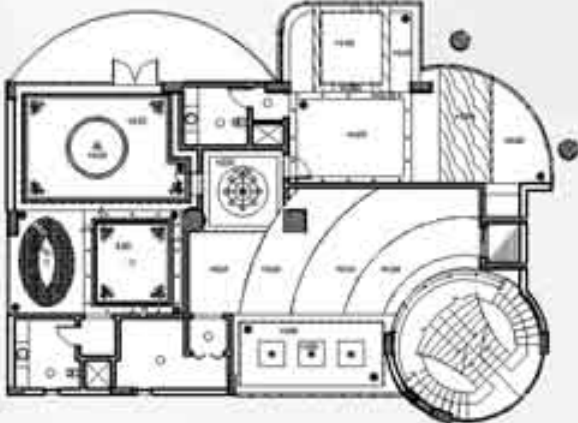
SECOND & THIRD FLOOR LIGHTING



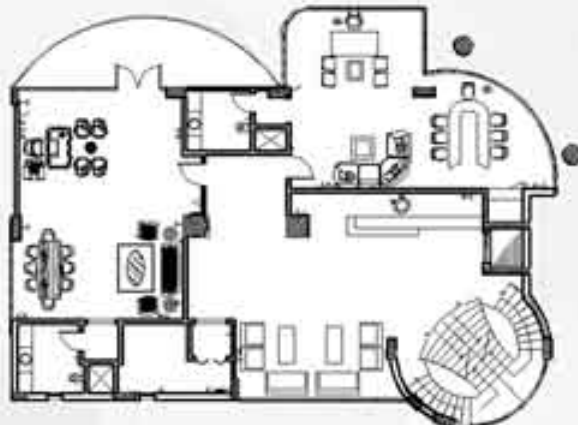
SECOND & THIRD FLOOR FURNITURE LAYOUT



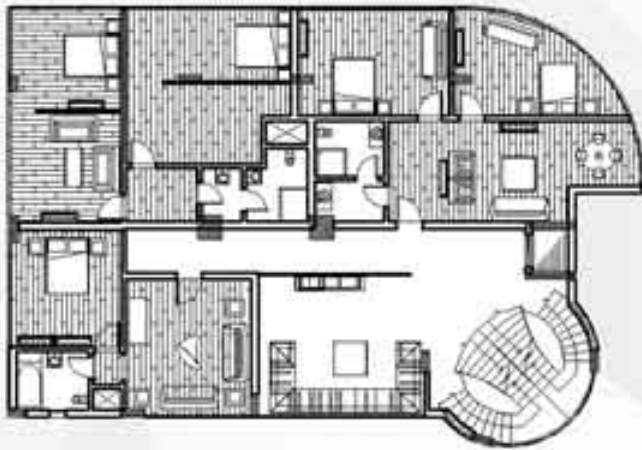
FORTH FLOOR FLOORING



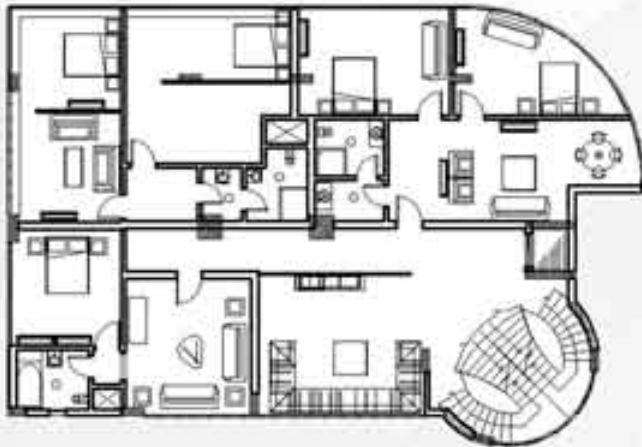
FORTH FLOOR LIGHTING



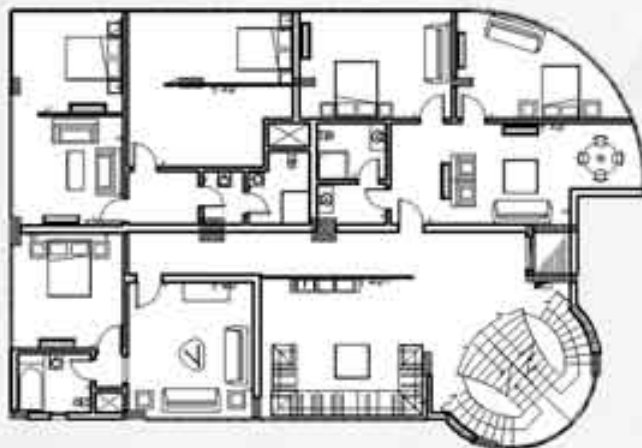
FORTH FLOOR FURNITURE LAYOUT



SIX FLOOR FLOORING



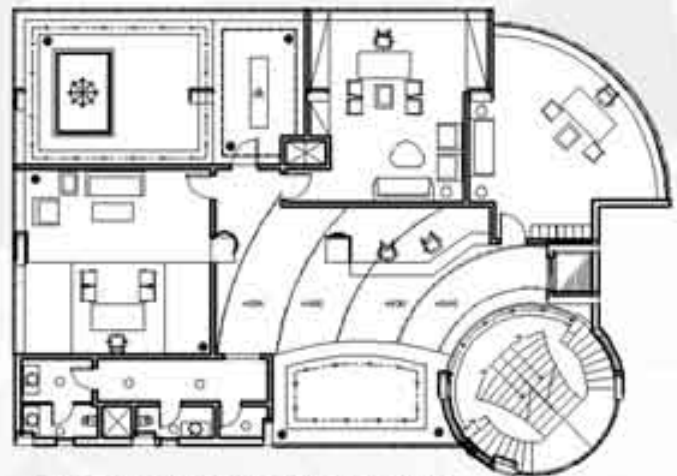
SIX FLOOR LIGHTING



SIX FLOOR FURNITURE LAYOUT



FIFTH FLOOR FLOORING



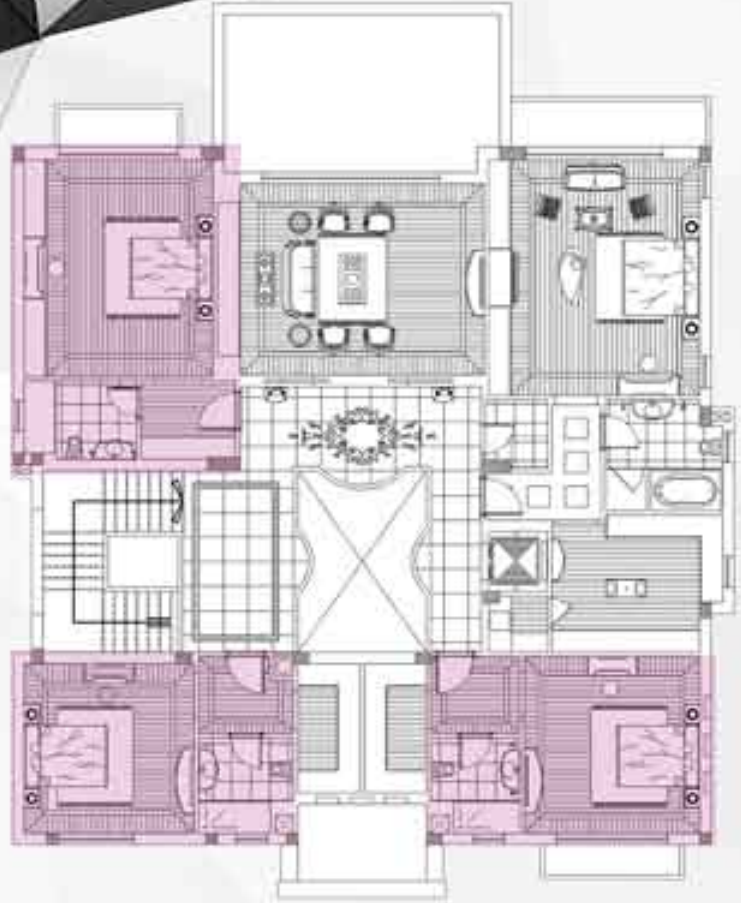
FIFTH FLOOR LIGHTING



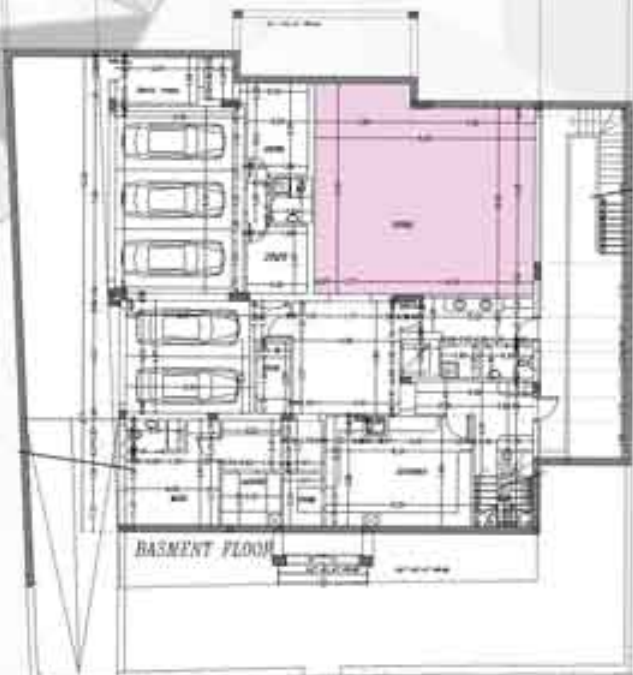
FIFTH FLOOR FURNITURE LAYOUT

RESIDENTIAL VILLA CAIRO, EGYPT 2015

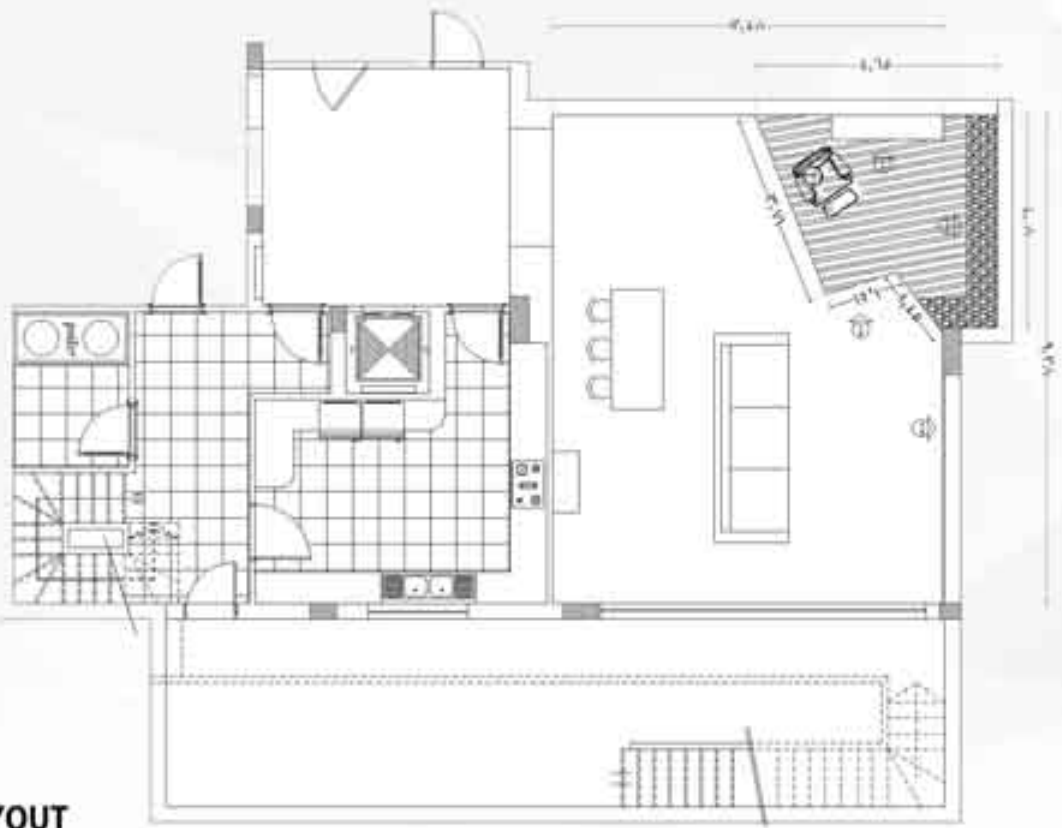
THIS PRE-EXISTING VILLA BLUE PRINTS WERE DELIVERED TO US TO DESIGN A FAMILY ROOM IN THE BASEMENT, TWO TEENS GIRLS ROOMS AND AN EIGHT YEARS OLD BOY. THE CLIENT ASKED FOR A HIP TRENDY DESIGNS THAT COULD MATCH HIS FAMILY INTERSET AND IDINITY. I WORKED ON THIS PROJECT AS THE TEAM LEADER AND HEAD DESIGNER. WE HAD A PRESENTATION ARCHITECT DO THE 3D FOR THE FAMILY ROOM BUT THE OTHER SPACES WE JUST USED MOOD BOARDS TO SHOW THE IMPLANTED DESIGNS.



FIRST FLOOR



BASEMENT FLOOR



FURNITURE LAYOUT

WE FURNISHED THIS SPACE TO MEET UP WITH EVERY FAMILY MEMBER NEED,
 WE HAVE THIS SMALL BOOK LIBRARY WITH A RECLINER FOR THE READING MAMA,
 A HUGE SCREEN WITH L-SHAPE SOFA FOR THE GAMING GANG
 AND OF COURSE THE DINNING TABLE FOR ALL THE MEALS THE FAMILY GONNA HAVE IN HERE

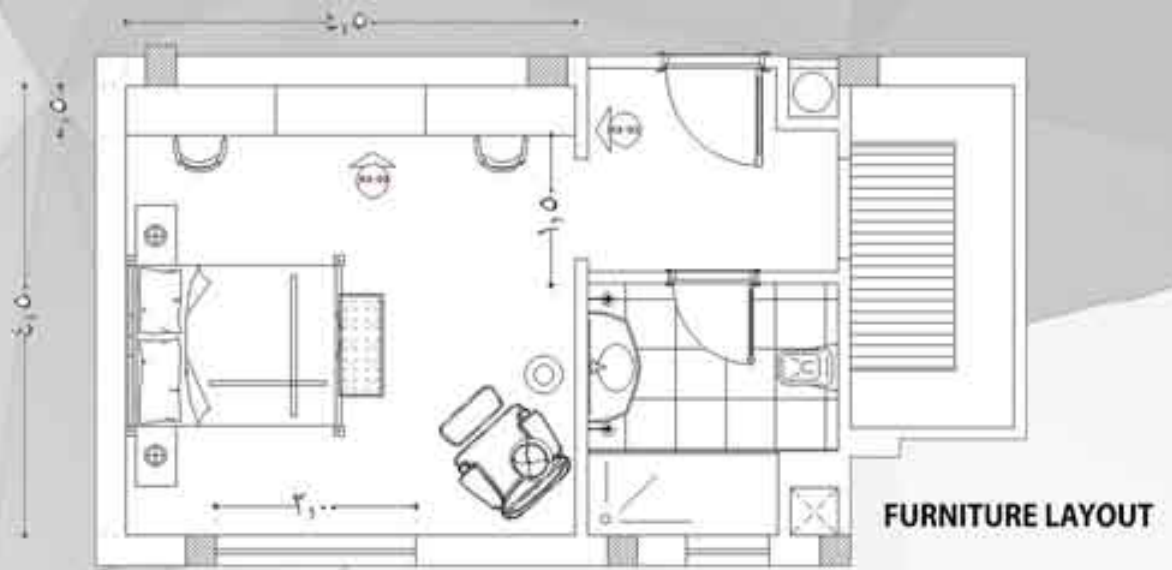


FLOORING DESIGN:

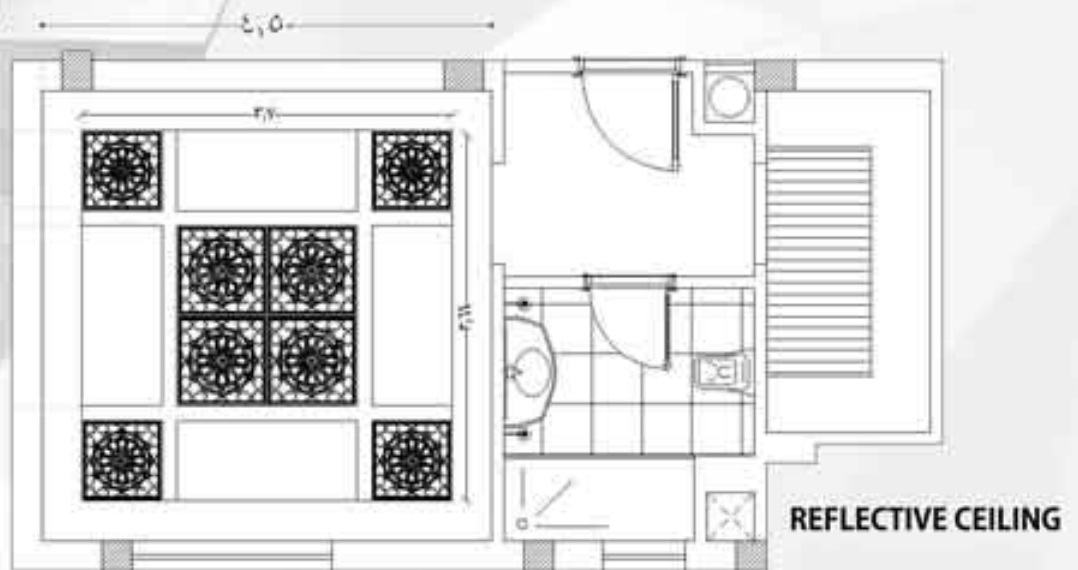
WE CHOSE TO MIX BEIGE MARBLE TILES FOR DURABILITY
 AND DARK WOOD FLOORING IN THE READING ZONE
 TO GIVE SOME WARMTH TO THIS SPACE.

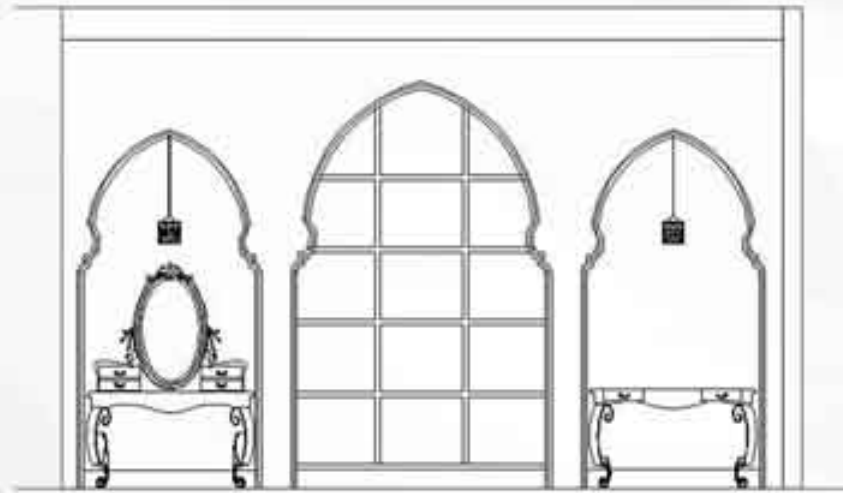


3D TO PRESENT THE IDEA
*A PRESENTATION ARCHITECT DID THIS 3D I ONLY DESIGNED IT

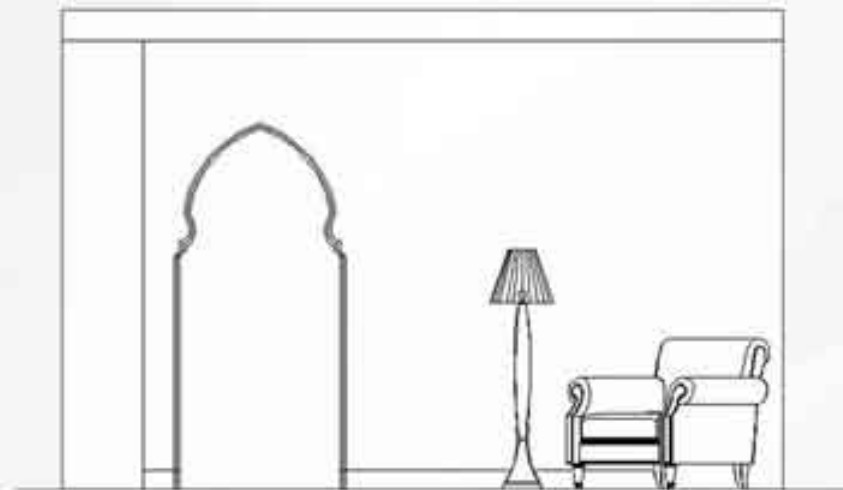


RANA'S ROOM:
 SHE WANTED A MODERN DESIGN
 WITH AN AUTHENTIC FEELING.
 SO I USED THE OUTLINE OF THE
 MOROCCAN ARCHES AND
 ISLAMIC PATTERNS IN THE
 REFLECTIVE CEILING YET WITH
 WHITE PLAIN COLOR TO GIVE
 THIS MODERN FEELING.
 THEN USED COLORFUL
 ACCESSORIES TO WARM UP
 THE SPACE.

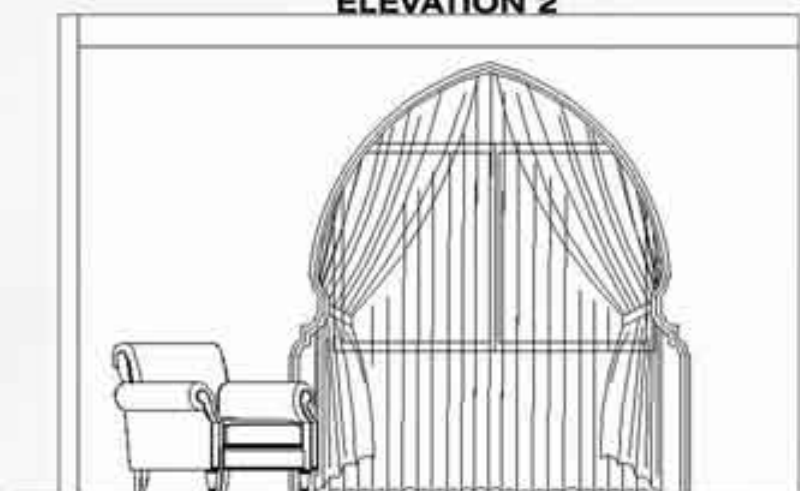




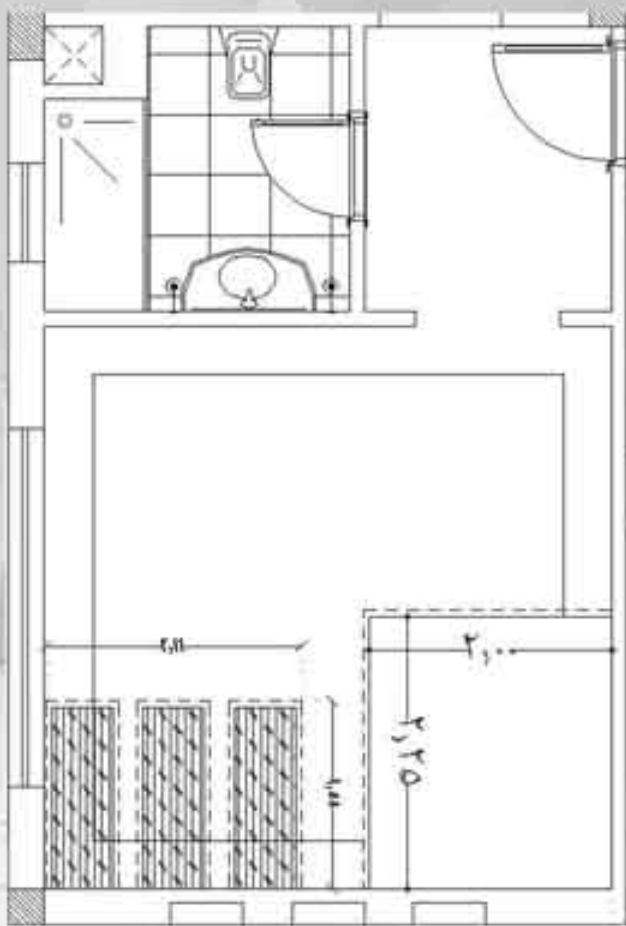
ELEVATION 1



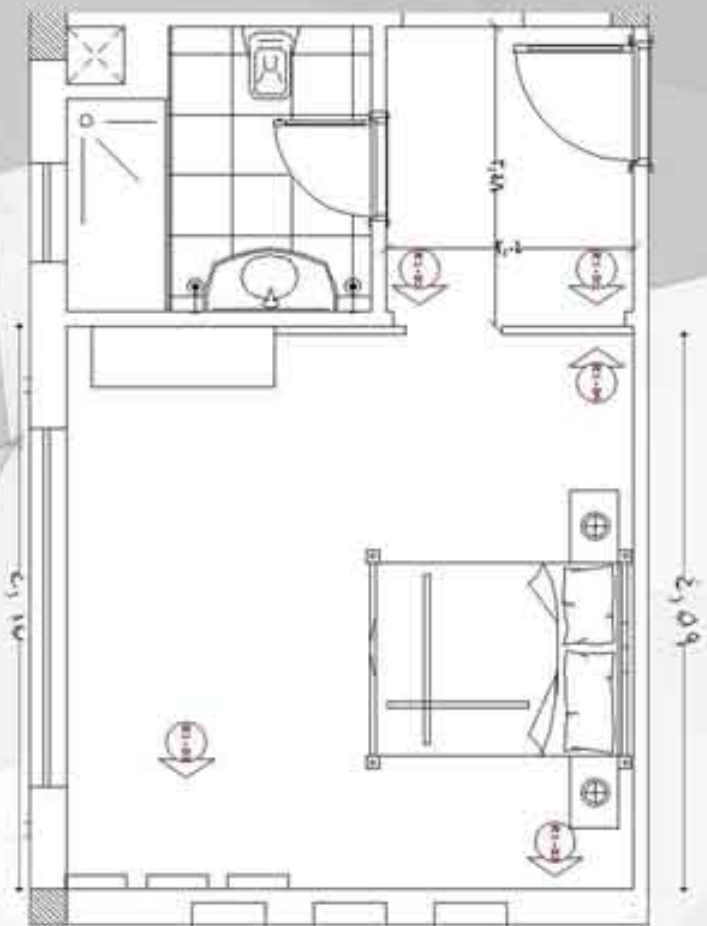
ELEVATION 2



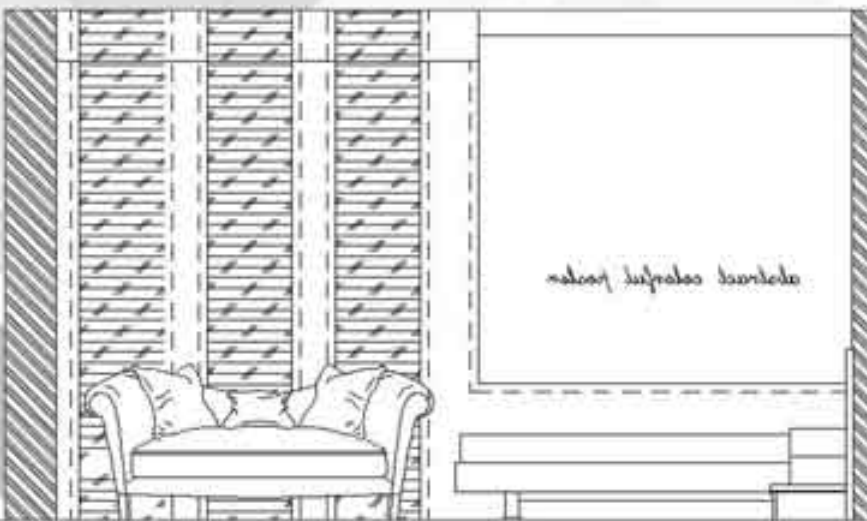
ELEVATION 3



REFLECTIVE CEILING



FURNITURE LAYOUT



ELEVATION 1

RANDA'S ROOM:
 SHE WANTED A BLACK AND WHITE MODERN THEMED DESIGN, SO I USED THIS TENTED GLASS L SHAPED STRIPS WITH INDIRECT LIGHT IN THE BACK OF THE SOFA UP TO THE CEILING LIKE IN THE PICTURE 1, AND ALSO AGAIN IN THE WALL BETWEEN HER ROOM AND DRESSING "ELEVATION 2".
 I ALSO HAD THIS GROVE IN THE WALL TO IN-BED THE COLORFUL ABSTRACT POSTER FOR HER HORSE IN ORDER TO SPICE THE ROOM UP AND BALANCE THE MONOCHROME SPACE.



PICTURE 1



ART CHOICES

THANK YOU